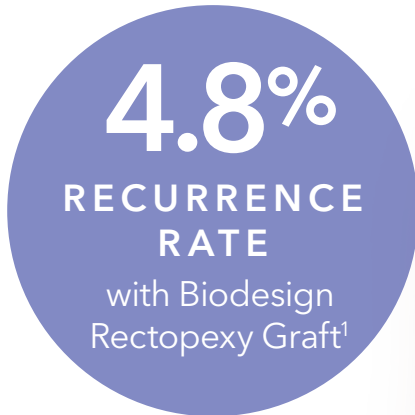


# Specifically indicated for rectal prolapse repair

The Biodesign Rectopexy Graft  
results in **low recurrence rates**  
in ventral rectopexy.<sup>1</sup>



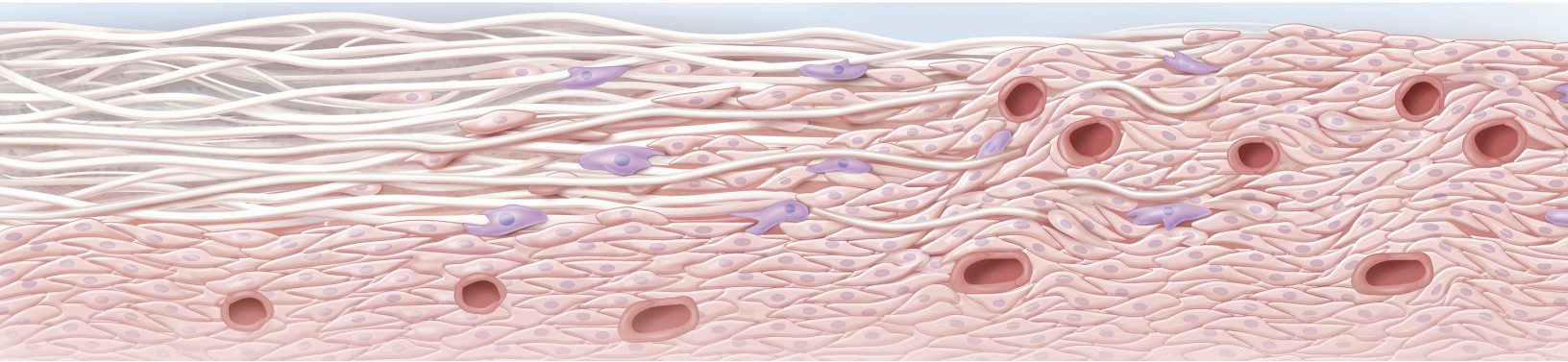
**Biodesign**<sup>®</sup>  
BIOLOGIC GRAFT PORTFOLIO

1. Internal Cook Biotech Incorporated document: RP2023-00012. In a clinical study involving 146 patients, seven recurrences were reported, and one patient complained of coccygeal pain where the graft was sutured to the sacral ligament.

# Biodesign biologics become you™

## No permanent material left behind<sup>2</sup>

Biodesign biologic grafts are derived from **small intestinal submucosa (SIS)**, a naturally occurring, **intact extracellular matrix**. SIS acts as a scaffold that allows host cells to infiltrate and **remodel into vascularized tissue**, leaving **no permanent material in the patient's body**.<sup>2</sup>



SIS scaffold ➔ Infiltration of host cells ➔ Vascularized tissue

### Product information

#### Biodesign Rectopexy Graft

Used to reinforce soft tissue where weakness exists in the gastroenterological anatomy including transabdominal repair of colon and rectal prolapse

Order Number	Reference Part Number	Size cm
G35247	C-BRG-7X20-US	7 x 20

### Product features

- Manufactured in the US
- Biologic xenograft made from porcine SIS
- Non-cross-linked, non-dermis
- Easily hydrated in the operating room
- No special orientation or sidedness
- Suitable for use in open, laparoscopic, or robotic procedures
- Off-the-shelf graft that does not require special storage
- Translucent once hydrated to easily visualize suture positioning
- Does not require AATB tissue tracking
- MRI safe

2. Franklin ME Jr, Trevino JM, Portillo G, Vela I, Glass JL, Gonzalez JJ. The use of porcine small intestinal submucosa as a prosthetic material for laparoscopic hernia repair in infected and potentially contaminated field: Long-term follow-up. *Surg Endosc.* 2008;22(9):1941-1946.

### IMPORTANT RISK INFORMATION

As with all implantable xenografts, risks exist. Scan the QR code for detailed product information, including a link to the Instructions for Use, which contains the indication statement, contraindications, precautions, and potential complications.

